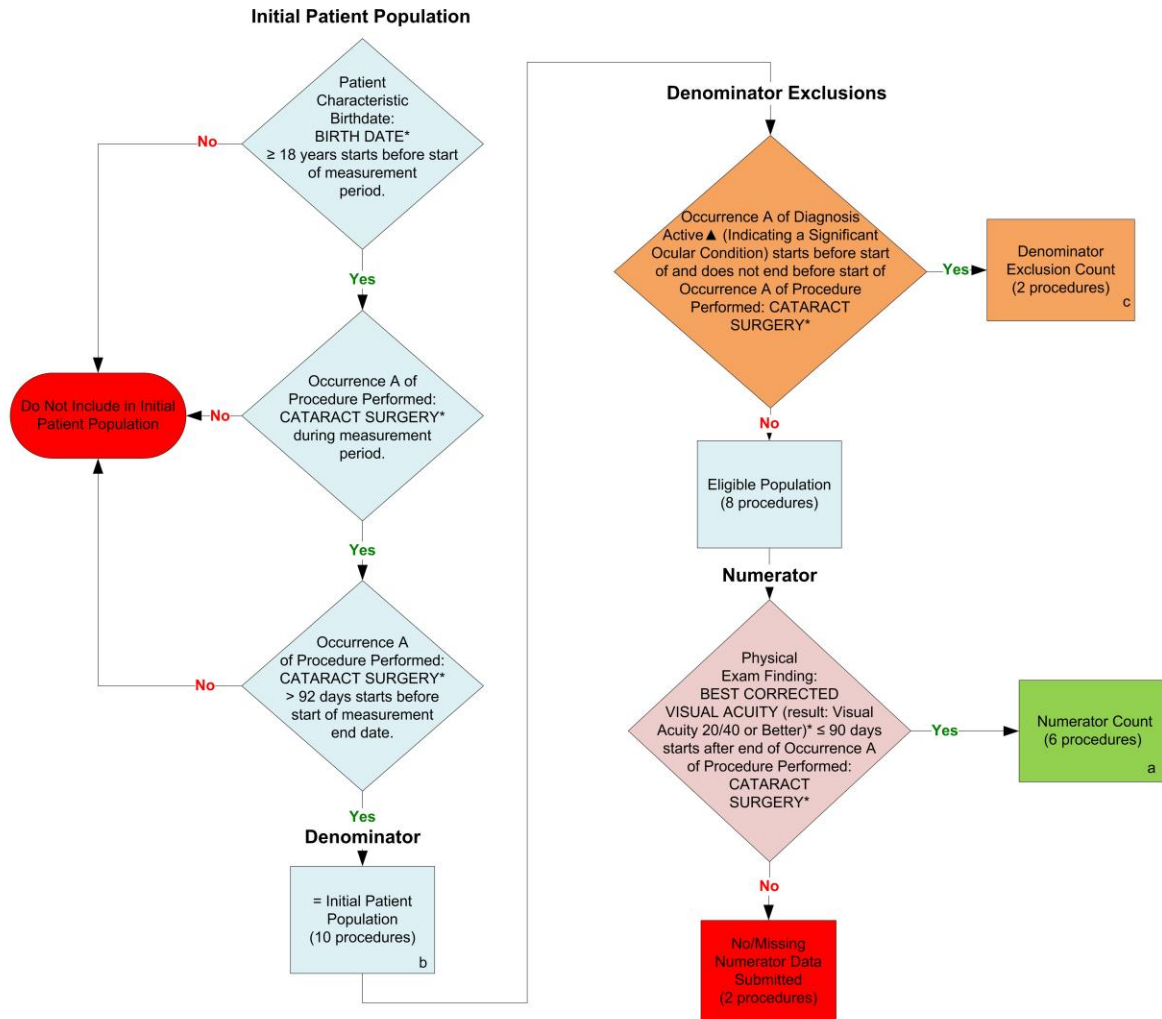


2014 eCQM Flow
eCQM Measure Identifier: CMS133v3
NQF 0565: Cataracts: 20/40 or Better Visual Acuity within 90 Days Following Cataract Surgery



*Please refer to the specific section of the eCQM to identify the QDM data elements and associated value sets for use in reporting this eCQM.

▲ For a listing of appropriate significant ocular conditions impacting the visual outcome of surgery, please refer to the QDM data elements and associated value sets as specific data element names have not been listed.

SAMPLE CALCULATION:

Performance Rate =

$$\frac{\text{Numerator (a=6 procedures)}}{\text{Denominator (b=10 procedures) - Denominator Exclusions (c=2 procedures) - Denominator Exceptions (N/A)}} = 75.00\%$$

2014 eCQM Flows
Measure Identifier: CMS133v3
NQF 0565: Cataracts: 20/40 or Better Visual Acuity within 90 Days Following Cataract Surgery

Please refer to the specific section of the eCQM to identify the QDM data elements and associated value sets for use in reporting this eCQM.

1. Start Initial Patient Population
2. Check Patient Characteristic Birthdate:
 - a. If the QDM data element, BIRTH DATE, is greater than or equal to 18 years of age before the start of the measurement period equals No, do not include in Initial Patient Population and stop processing.
 - b. If the QDM data element, BIRTH DATE, is greater than or equal to 18 years of age before the start of the measurement period, equals Yes continue processing and proceed to check Procedure Performed.
3. Check Procedure Performed:
 - a. If Occurrence A of QDM data element, CATARACT SURGERY during measurement period equals Yes, proceed to check Procedure Performed.
 - b. If Occurrence A of QDM data element, CATARACT SURGERY during the measurement period equals No, do not include in the Initial Patient Population and stop processing.
4. Check Procedure Performed:
 - a. If Occurrence A of QDM data element CATARACT SURGERY is greater than 92 days starts before start of measurement end date equals Yes, include in the Initial Patient Population and proceed to Denominator.
 - b. If Occurrence A of QDM data element CATARACT SURGERY greater than 92 days starts before start of measurement end date equals No, do not include in the Initial Patient Population and stop processing.
5. Start Denominator
 - a. Denominator equals the Initial Patient Population. Denominator is represented by the letter B in the sample calculation listed at the end of this document. Letter B equals 10 patients in the sample calculation.
6. Start Denominator Exclusions
7. Check Diagnosis Active:
 - a. If QDM data element ACUTE AND SUBACUTE IRIDOCYCLITIS starts before start of but does not end before start of Occurrence A of QDM data element CATARACT SURGERY equals Yes, include in Exclusions count. Exclusions are represented by the letter C in the sample calculation listed at the end of this document. Letter C equals 2 patients in the sample calculation.

- b. If QDM data element ACUTE AND SUBACUTE IRIDOCYCLITIS starts before start of but does not end before start of Occurrence A of QDM data element CATARACT SURGERY equals No, proceed to check next Diagnosis Active.
- c. If QDM data element PATHOLOGIC MYOPIA starts before start of but does not end before start of Occurrence A of QDM data element CATARACT SURGERY equals Yes, include in Exclusions count. Exclusions are represented by the letter C in the sample calculation listed at the end of this document. Letter C equals 2 patients in the sample calculation.
- d. If QDM data element PATHOLOGIC MYOPIA starts before start of but does not end before start of Occurrence A of QDM data element CATARACT SURGERY equals No, proceed to check next Diagnosis Active.
- e. If QDM data element CLOUDY CORNEA starts before start of but does not end before start of Occurrence A of QDM data element CATARACT SURGERY equals Yes, include in Exclusions count. Exclusions are represented by the letter C in the sample calculation listed at the end of this document. Letter C equals 2 patients in the sample calculation.
- f. If QDM data element CLOUDY CORNEA starts before start of but does not end before start of Occurrence A of QDM data element CATARACT SURGERY equals No, proceed to check next Diagnosis Active.
- g. If QDM data element SCLERITIS AND EPISCLERITIS starts before start of but does not end before start of Occurrence A of QDM data element CATARACT SURGERY equals Yes, include in Exclusions count. Exclusions are represented by the letter C in the sample calculation listed at the end of this document. Letter C equals 2 patients in the sample calculation.
- h. If QDM data element SCLERITIS AND EPISCLERITIS starts before start of but does not end before start of Occurrence A of QDM data element CATARACT SURGERY equals No, proceed to check next Diagnosis Active.
- i. If QDM data element DISORDERS OF VISUAL CORTEX starts before start of but does not end before start of Occurrence A of QDM data element CATARACT SURGERY equals Yes, include in Exclusions count. Exclusions are represented by the letter C in the sample calculation listed at the end of this document. Letter C equals 2 patients in the sample calculation.
- j. If QDM data element DISORDERS OF VISUAL CORTEX starts before start of but does not end before start of Occurrence A of QDM data element CATARACT SURGERY equals No, proceed to check next Diagnosis Active.
- k. If QDM data element OPTIC ATROPHY starts before start of but does not end before start of Occurrence A of QDM data element CATARACT SURGERY equals Yes, include in Exclusions count. Exclusions are represented by the letter C in the sample calculation listed at the end of this document. Letter C equals 2 patients in the sample calculation.
- l. If QDM data element OPTIC ATROPHY starts before start of but does not end before start of Occurrence A of QDM data element CATARACT SURGERY equals No, proceed to check next Diagnosis Active.
- m. If QDM data element OTHER ENDOPHTHALMITIS starts before start of but does not end before start of Occurrence A of QDM data element CATARACT

SURGERY equals Yes, include in Exclusions count. Exclusions are represented by the letter C in the sample calculation listed at the end of this document. Letter C equals 2 patients in the sample calculation.

- n. If QDM data element OTHER ENDOPHTHALMITIS starts before start of but does not end before start of Occurrence A of QDM data element CATARACT SURGERY equals No, proceed to check next Diagnosis Active.
- o. If QDM data element SEPARATION OF RETINAL LAYERS starts before start of but does not end before start of Occurrence A of QDM data element CATARACT SURGERY equals Yes, include in Exclusions count. Exclusions are represented by the letter C in the sample calculation listed at the end of this document. Letter C equals 2 patients in the sample calculation.
- p. If QDM data element SEPARATION OF RETINAL LAYERS starts before start of but does not end before start of Occurrence A of QDM data element CATARACT SURGERY equals No, proceed to check next Diagnosis Active.
- q. If QDM data element DIABETIC RETINOPATHY starts before start of but does not end before start of Occurrence A of QDM data element CATARACT SURGERY equals Yes, include in Exclusions count. Exclusions are represented by the letter C in the sample calculation listed at the end of this document. Letter C equals 2 patients in the sample calculation.
- r. If QDM data element DIABETIC RETINOPATHY starts before start of but does not end before start of Occurrence A of QDM data element CATARACT SURGERY equals No, proceed to check next Diagnosis Active.
- s. If QDM data element VISUAL FIELD DEFECTS starts before start of but does not end before start of Occurrence A of QDM data element CATARACT SURGERY equals Yes, include in Exclusions count. Exclusions are represented by the letter C in the sample calculation listed at the end of this document. Letter C equals 2 patients in the sample calculation.
- t. If QDM data element VISUAL FIELD DEFECTS starts before start of but does not end before start of Occurrence A of QDM data element CATARACT SURGERY equals No, proceed to check next Diagnosis Active.
- u. If QDM data element RETINAL DETACHMENT WITH RETINAL DEFECT starts before start of but does not end before start of Occurrence A of QDM data element CATARACT SURGERY equals Yes, include in Exclusions count. Exclusions are represented by the letter C in the sample calculation listed at the end of this document. Letter C equals 2 patients in the sample calculation.
- v. If QDM data element RETINAL DETACHMENT WITH RETINAL DEFECT starts before start of but does not end before start of Occurrence A of QDM data element CATARACT SURGERY equals No, proceed to check next Diagnosis Active.
- w. If QDM data element RETINAL VASCULAR OCCLUSION starts before start of but does not end before start of Occurrence A of QDM data element CATARACT SURGERY equals Yes, include in Exclusions count. Exclusions are represented by the letter C in the sample calculation listed at the end of this document. Letter C equals 2 patients in the sample calculation.

- x. If QDM data element RETINAL VASCULAR OCCLUSION starts before start of but does not end before start of Occurrence A of QDM data element CATARACT SURGERY equals No, proceed to check next Diagnosis Active.
- y. If QDM data element PURULENT ENDOPHTHALMITIS starts before start of but does not end before start of Occurrence A of QDM data element CATARACT SURGERY equals Yes, include in Exclusions count. Exclusions are represented by the letter C in the sample calculation listed at the end of this document. Letter C equals 2 patients in the sample calculation.
- z. If QDM data element PURULENT ENDOPHTHALMITIS starts before start of but does not end before start of Occurrence A of QDM data element CATARACT SURGERY equals No, proceed to check next Diagnosis Active.
- aa. If QDM data element CERTAIN TYPES OF IRIDOCYCLITIS starts before start of but does not end before start of Occurrence A of QDM data element CATARACT SURGERY equals Yes, include in Exclusions count. Exclusions are represented by the letter C in the sample calculation listed at the end of this document. Letter C equals 2 patients in the sample calculation listed at the end of this document.
- bb. If QDM data element CERTAIN TYPES OF IRIDOCYCLITIS starts before start of but does not end before start of Occurrence A of QDM data element CATARACT SURGERY equals No, proceed to check next Diagnosis Active.
- cc. If QDM data element GLAUCOMA ASSOCIATED WITH CONGENITAL ANOMALIES, DYSTROPHIES, AND SYSTEMIC SYNDROMES starts before start of but does not end before start of Occurrence A of QDM data element CATARACT SURGERY equals Yes, include in Exclusions count. Exclusions are represented by the letter C in the sample calculation listed at the end of this document. Letter C equals 2 patients in the sample calculation.
- dd. If QDM data element GLAUCOMA ASSOCIATED WITH CONGENITAL ANOMALIES, DYSTROPHIES, AND SYSTEMIC SYNDROMES starts before start of but does not end before start of Occurrence A of QDM data element CATARACT SURGERY equals No, proceed to check next Diagnosis Active.
- ee. If QDM data element CHRONIC IRIDOCYCLITIS starts before start of but does not end before start of Occurrence A of QDM data element CATARACT SURGERY equals Yes, include in Exclusions count. Exclusions are represented by the letter C in the sample calculation listed at the end of this document. Letter C equals 2 patients in the sample calculation.
- ff. If QDM data element CHRONIC IRIDOCYCLITIS starts before start of but does not end before start of Occurrence A of QDM data element CATARACT SURGERY equals No, proceed to check next Diagnosis Active.
- gg. If QDM data element CHOROIDAL DEGENERATIONS starts before start of but does not end before start of Occurrence A of QDM data element CATARACT SURGERY equals Yes, include in Exclusions count. Exclusions are represented by the letter C in the sample calculation listed at the end of this document. Letter C equals 2 patients in the sample calculation.

- hh. If QDM data element CHOROIDAL DEGENERATIONS starts before start of but does not end before start of Occurrence A of QDM data element CATARACT SURGERY equals No, proceed to check next Diagnosis Active.
- ii. If QDM data element OPTIC NEURITIS starts before start of but does not end before start of Occurrence A of QDM data element CATARACT SURGERY equals Yes, include in Exclusions count. Exclusions are represented by the letter C in the sample calculation listed at the end of this document. Letter C equals 2 patients in the sample calculation.
- jj. If QDM data element OPTIC NEURITIS starts before start of but does not end before start of Occurrence A of QDM data element CATARACT SURGERY equals No, proceed to check next Diagnosis Active.
- kk. If QDM data element OTHER BACKGROUND RETINOPATHY AND RETINAL VASCULAR CHANGES starts before start of but does not end before start of Occurrence A of QDM data element CATARACT SURGERY equals Yes, include in Exclusions count. Exclusions are represented by the letter C in the sample calculation listed at the end of this document. Letter C equals 2 patients in the sample calculation.
- ll. If QDM data element OTHER BACKGROUND RETINOPATHY AND RETINAL VASCULAR CHANGES starts before start of but does not end before start of Occurrence A of QDM data element CATARACT SURGERY equals No, proceed to check next Diagnosis Active.
- mm. If QDM data element OTHER CORNEAL DEFORMITIES starts before start of but does not end before start of Occurrence A of QDM data element CATARACT SURGERY equals Yes, include in Exclusions count. Exclusions are represented by the letter C in the sample calculation listed at the end of this document. Letter C equals 2 patients in the sample calculation.
- nn. If QDM data element OTHER CORNEAL DEFORMITIES starts before start of but does not end before start of Occurrence A of QDM data element CATARACT SURGERY equals No, proceed to check next Diagnosis Active.
- oo. If QDM data element OTHER RETINAL DISORDERS starts before start of but does not end before start of Occurrence A of QDM data element CATARACT SURGERY equals Yes, include in Exclusions count. Exclusions are represented by the letter C in the sample calculation listed at the end of this document. Letter C equals 2 patients in the sample calculation.
- pp. If QDM data element OTHER RETINAL DISORDERS starts before start of but does not end before start of Occurrence A of QDM data element CATARACT SURGERY equals No, proceed to check next Diagnosis Active.
- qq. If QDM data element PRIOR PENETRATING KERATOPLASTY starts before start of but does not end before start of Occurrence A of QDM data element CATARACT SURGERY equals Yes, include in Exclusions count. Exclusions are represented by the letter C in the sample calculation listed at the end of this document. Letter C equals 2 patients in the sample calculation.
- rr. If QDM data element PRIOR PENETRATING KERATOPLASTY starts before start of but does not end before start of Occurrence A of QDM data element CATARACT SURGERY equals No, proceed to check next Diagnosis Active.

- ss. If QDM data element OTHER AND UNSPECIFIED FORMS OF CHORIORETINITIS AND RETINOCHOROIDITIS starts before start of but does not end before start of Occurrence A of QDM data element CATARACT SURGERY equals Yes, include in Exclusions count. Exclusions are represented by the letter C in the sample calculation listed at the end of this document. Letter C equals 2 patients in the sample calculation.
- tt. If QDM data element OTHER AND UNSPECIFIED FORMS OF CHORIORETINITIS AND RETINOCHOROIDITIS starts before start of but does not end before start of Occurrence A of QDM data element CATARACT SURGERY equals No, proceed to check next Diagnosis Active.
- uu. If QDM data element AMBLYOPIA starts before start of but does not end before start of Occurrence A of QDM data element CATARACT SURGERY equals Yes, include in Exclusions count. Exclusions are represented by the letter C in the sample calculation listed at the end of this document. Letter C equals 2 patients in the sample calculation.
- vv. If QDM data element AMBLYOPIA starts before start of but does not end before start of Occurrence A of QDM data element CATARACT SURGERY equals No, proceed to check next Diagnosis Active.
- ww. If QDM data element CORNEAL EDEMA starts before start of but does not end before start of Occurrence A of QDM data element CATARACT SURGERY equals Yes, include in Exclusions count. Exclusions are represented by the letter C in the sample calculation listed at the end of this document. Letter C equals 2 patients in the sample calculation.
- xx. If QDM data element CORNEAL EDEMA starts before start of but does not end before start of Occurrence A of QDM data element CATARACT SURGERY equals No, proceed to check next Diagnosis Active.
- yy. If QDM data element NYSTAGMUS AND OTHER IRREGULAR EYE MOVEMENTS starts before start of but does not end before start of Occurrence A of QDM data element CATARACT SURGERY equals Yes, include in Exclusions count. Exclusions are represented by the letter C in the sample calculation listed at the end of this document. Letter C equals 2 patients in the sample calculation.
- zz. If QDM data element NYSTAGMUS AND OTHER IRREGULAR EYE MOVEMENTS starts before start of but does not end before start of Occurrence A of QDM data element CATARACT SURGERY equals No, proceed to check next Diagnosis Active.
- aaa. If QDM data element MODERATE OR SEVERE INPAIRMENT, BETTER EYE, PROFOUND IMPAIRMENT LESSER EYE starts before start of but does not end before start of Occurrence A of QDM data element CATARACT SURGERY equals Yes, include in Exclusions count. Exclusions are represented by the letter C in the sample calculation listed at the end of this document. Letter C equals 2 patients in the sample calculation.
- bbb. If QDM data element MODERATE OR SEVERE INPAIRMENT, BETTER EYE, PROFOUND IMPAIRMENT LESSER EYE starts before start of but does not end

- before start of Occurrence A of QDM data element CATARACT SURGERY equals No, proceed to check next Diagnosis Active.
- ccc. If QDM data element HEREDITARY CHOROIDAL DYSTROPHIES starts before start of but does not end before start of Occurrence A of QDM data element CATARACT SURGERY equals Yes, include in Exclusions count. Exclusions are represented by the letter C in the sample calculation listed at the end of this document. Letter C equals 2 patients in the sample calculation.
 - ddd. If QDM data element HEREDITARY CHOROIDAL DYSTROPHIES starts before start of but does not end before start of Occurrence A of QDM data element CATARACT SURGERY equals No, proceed to check next Diagnosis Active.
 - eee. If QDM data element HEREDITARY RETINAL DYSTROPHIES starts before start of but does not end before start of Occurrence A of QDM data element CATARACT SURGERY equals Yes, include in Exclusions count. Exclusions are represented by the letter C in the sample calculation listed at the end of this document. Letter C equals 2 patients in the sample calculation.
 - fff. If QDM data element HEREDITARY RETINAL DYSTROPHIES starts before start of but does not end before start of Occurrence A of QDM data element CATARACT SURGERY equals No, proceed to check next Diagnosis Active.
 - ggg. If QDM data element BURN CONFINED TO EYE AND ADNEXA starts before start of but does not end before start of Occurrence A of QDM data element CATARACT SURGERY equals Yes, include in Exclusions count. Exclusions are represented by the letter C in the sample calculation listed at the end of this document. Letter C equals 2 patients in the sample calculation.
 - hhh. If QDM data element BURN CONFINED TO EYE AND ADNEXA starts before start of but does not end before start of Occurrence A of QDM data element CATARACT SURGERY equals No, proceed to check next Diagnosis Active.
 - iii. If QDM data element OTHER DISORDERS OF SCLERA starts before start of but does not end before start of Occurrence A of QDM data element CATARACT SURGERY equals Yes, include in Exclusions count. Exclusions are represented by the letter C in the sample calculation listed at the end of this document. Letter C equals 2 patients in the sample calculation.
 - jjj. If QDM data element OTHER DISORDERS OF SCLERA starts before start of but does not end before start of Occurrence A of QDM data element CATARACT SURGERY equals No, proceed to check next Diagnosis Active.
 - kkk. If QDM data element FOCAL CHOROIORETINITIS AND FOCAL RETINOCHOROIDITIS starts before start of but does not end before start of Occurrence A of QDM data element CATARACT SURGERY equals Yes, include in Exclusions count. Exclusions are represented by the letter C in the sample calculation listed at the end of this document. Letter C equals 2 patients in the sample calculation.
 - III. If QDM data element FOCAL CHOROIORETINITIS AND FOCAL RETINOCHOROIDITIS starts before start of but does not end before start of Occurrence A of QDM data element CATARACT SURGERY equals No, proceed to check next Diagnosis Active.

- mmm. If QDM data element DEGENERATIVE DISORDERS OF GLOBE starts before start of but does not end before start of Occurrence A of QDM data element CATARACT SURGERY equals Yes, include in Exclusions count. Exclusions are represented by the letter C in the sample calculation listed at the end of this document. Letter C equals 2 patients in the sample calculation.
- nnn. If QDM data element DEGENERATIVE DISORDERS OF GLOBE starts before start of but does not end before start of Occurrence A of QDM data element CATARACT SURGERY equals No, proceed to check next Diagnosis Active.
- ooo. If QDM data element DEGENERATION OF MACULA AND POSTERIOR POLE starts before start of but does not end before start of Occurrence A of QDM data element CATARACT SURGERY equals Yes, include in Exclusions count. Exclusions are represented by the letter C in the sample calculation listed at the end of this document. Letter C equals 2 patients in the sample calculation.
- ppp. If QDM data element DEGENERATION OF MACULA AND POSTERIOR POLE starts before start of but does not end before start of Occurrence A of QDM data element CATARACT SURGERY equals No, proceed to check next Diagnosis Active.
- qqq. If QDM data element DISSEMINATED CHORIORETINITIS AND DISSEMINATED RETINOCHOROIDITIS starts before start of but does not end before start of Occurrence A of QDM data element CATARACT SURGERY equals Yes, include in Exclusions count. Exclusions are represented by the letter C in the sample calculation listed at the end of this document. Letter C equals 2 patients in the sample calculation.
- rrr. If QDM data element DISSEMINATED CHORIORETINITIS AND DISSEMINATED RETINOCHOROIDITIS starts before start of but does not end before start of Occurrence A of QDM data element CATARACT SURGERY equals No, proceed to check next Diagnosis Active.
- sss. If QDM data element DIABETIC MACULAR EDEMA starts before start of but does not end before start of Occurrence A of QDM data element CATARACT SURGERY equals Yes, include in Exclusions count. Exclusions are represented by the letter C in the sample calculation listed at the end of this document. Letter C equals 2 patients in the sample calculation.
- ttt. If QDM data element DIABETIC MACULAR EDEMA starts before start of but does not end before start of Occurrence A of QDM data element CATARACT SURGERY equals No, proceed to check next Diagnosis Active.
- uuu. If QDM data element UVEITIS starts before start of but does not end before start of Occurrence A of QDM data element CATARACT SURGERY equals Yes, include in Exclusions count. Exclusions are represented by the letter C in the sample calculation listed at the end of this document. Letter C equals 2 patients in the sample calculation.
- vvv. If QDM data element UVEITIS starts before start of but does not end before start of Occurrence A of QDM data element CATARACT SURGERY equals No, proceed to check next Diagnosis Active.

- www. If QDM data element PROFOUND IMPAIRMENT, BOTH EYES starts before start of but does not end before start of Occurrence A of QDM data element CATARACT SURGERY equals Yes, include in Exclusions count. Exclusions are represented by the letter C in the sample calculation listed at the end of this document. Letter C equals 2 patients in the sample calculation.
- xxx. If QDM data element PROFOUND IMPAIRMENT, BOTH EYES starts before start of but does not end before start of Occurrence A of QDM data element CATARACT SURGERY equals No, proceed to check next Diagnosis Active.
- yyy. If QDM data element OTHER PROLIFERATIVE RETINOPATHY starts before start of but does not end before start of Occurrence A of QDM data element CATARACT SURGERY equals Yes, include in Exclusions count. Exclusions are represented by the letter C in the sample calculation listed at the end of this document. Letter C equals 2 patients in the sample calculation.
- zzz. If QDM data element OTHER PROLIFERATIVE RETINOPATHY starts before start of but does not end before start of Occurrence A of QDM data element CATARACT SURGERY equals No, proceed to check next Diagnosis Active.
- aaaa. If QDM data element CATARACT SECONDARY TO OCULAR DISORDERS starts before start of but does not end before start of Occurrence A of QDM data element CATARACT SURGERY equals Yes, include in Exclusions count. Exclusions are represented by the letter C in the sample calculation listed at the end of this document. Letter C equals 2 patients in the sample calculation.
- bbbb. If QDM data element CATARACT SECONDARY TO OCULAR DISORDERS starts before start of but does not end before start of Occurrence A of QDM data element CATARACT SURGERY equals No, proceed to check next Diagnosis Active.
- cccc. If QDM data element CHOROIDAL DETACHMENT starts before start of but does not end before start of Occurrence A of QDM data element CATARACT SURGERY equals Yes, include in Exclusions count. Exclusions are represented by the letter C in the sample calculation listed at the end of this document. Letter C equals 2 patients in the sample calculation.
- dddd. If QDM data element CHOROIDAL DETACHMENT starts before start of but does not end before start of Occurrence A of QDM data element CATARACT SURGERY equals No, proceed to check next Diagnosis Active.
- eeee. If QDM data element DISORDERS OF OPTIC CHIASM starts before start of but does not end before start of Occurrence A of QDM data element CATARACT SURGERY equals Yes, include in Exclusions count. Exclusions are represented by the letter C in the sample calculation listed at the end of this document. Letter C equals 2 patients in the sample calculation.
- ffff. If QDM data element DISORDERS OF OPTIC CHIASM starts before start of but does not end before start of Occurrence A of QDM data element CATARACT SURGERY equals No, proceed to check next Diagnosis Active.
- gggg. If QDM data element INJURY TO OPTIC NERVE AND PATHWAYS starts before start of but does not end before start of Occurrence A of QDM data element CATARACT SURGERY equals Yes, include in Exclusions count. Exclusions are

- represented by the letter C in the sample calculation listed at the end of this document. Letter C equals 2 patients in the sample calculation.
- hhhh. If QDM data element INJURY TO OPTIC NERVE AND PATHWAYS starts before start of but does not end before start of Occurrence A of QDM data element CATARACT SURGERY equals No, proceed to check next Diagnosis Active.
- iiii. If QDM data element CHOROIDAL HEMORRHAGE AND RUPTURE starts before start of but does not end before start of Occurrence A of QDM data element CATARACT SURGERY equals Yes, include in Exclusions count. Exclusions are represented by the letter C in the sample calculation listed at the end of this document. Letter C equals 2 patients in the sample calculation.
- jjjj. If QDM data element CHOROIDAL HEMORRHAGE AND RUPTURE starts before start of but does not end before start of Occurrence A of QDM data element CATARACT SURGERY equals No, proceed to check next Diagnosis Active.
- kkkk. If QDM data element OTHER DISORDERS OF OPTIC NERVE starts before start of but does not end before start of Occurrence A of QDM data element CATARACT SURGERY equals Yes, include in Exclusions count. Exclusions are represented by the letter C in the sample calculation listed at the end of this document. Letter C equals 2 patients in the sample calculation.
- llll. If QDM data element OTHER DISORDERS OF OPTIC NERVE starts before start of but does not end before start of Occurrence A of QDM data element CATARACT SURGERY equals No, proceed to check next Diagnosis Active.
- mmmm. If QDM data element GLAUCOMA starts before start of but does not end before start of Occurrence A of QDM data element CATARACT SURGERY equals Yes, include in Exclusions count. Exclusions are represented by the letter C in the sample calculation listed at the end of this document. Letter C equals 2 patients in the sample calculation.
- nnnn. If QDM data element GLAUCOMA starts before start of but does not end before start of Occurrence A of QDM data element CATARACT SURGERY equals No, proceed to check next Diagnosis Active.
- oooo. If QDM data element CHORIORETINAL SCARS starts before start of but does not end before start of Occurrence A of QDM data element CATARACT SURGERY equals Yes, include in Exclusions count. Exclusions are represented by the letter C in the sample calculation listed at the end of this document. Letter C equals 2 patients in the sample calculation.
- pppp. If QDM data element CHORIORETINAL SCARS starts before start of but does not end before start of Occurrence A of QDM data element CATARACT SURGERY equals No, proceed to check next Diagnosis Active.
- qqqq. If QDM data element HEREDITARY CORNEAL DYSTROPHIES starts before start of but does not end before start of Occurrence A of QDM data element CATARACT SURGERY equals Yes, include in Exclusions count. Exclusions are represented by the letter C in the sample calculation listed at the end of this document. Letter C equals 2 patients in the sample calculation.

rrrr. If QDM data element HEREDITARY CORNEAL DYSTROPHIES starts before start of but does not end before start of Occurrence A of QDM data element CATARACT SURGERY equals No, proceed to check next Diagnosis Active.

ssss. If QDM data element CENTRAL CORNEAL ULCER starts before start of but does not end before start of Occurrence A of QDM data element CATARACT SURGERY equals Yes, include in Exclusions count. Exclusions are represented by the letter C in the sample calculation listed at the end of this document. Letter C equals 2 patients in the sample calculation.

tttt. If QDM data element CENTRAL CORNEAL ULCER starts before start of but does not end before start of Occurrence A of QDM data element CATARACT SURGERY equals No, proceed to check next Diagnosis Active.

uuuu. If QDM data element CORNEAL OPACITY AND OTHER DISORDERS OF CORNEA starts before start of but does not end before start of Occurrence A of QDM data element CATARACT SURGERY equals Yes, include in Exclusions count. Exclusions are represented by the letter C in the sample calculation listed at the end of this document. Letter C equals 2 patients in the sample calculation.

vvvv. If QDM data element CORNEAL OPACITY AND OTHER DISORDERS OF CORNEA starts before start of but does not end before start of Occurrence A of QDM data element CATARACT SURGERY equals No, proceed to check next Diagnosis Active.

www. If QDM data element OPEN WOUND OF EYEBALL starts before start of but does not end before start of Occurrence A of QDM data element CATARACT SURGERY equals Yes, include in Exclusions count. Exclusions are represented by the letter C in the sample calculation listed at the end of this document. Letter C equals 2 patients in the sample calculation.

xxxx. If QDM data element OPEN WOUND OF EYEBALL starts before start of but does not end before start of Occurrence A of QDM data element CATARACT SURGERY equals No, proceed to Numerator.

8. Start Numerator

9. Check Physical Exam Finding:

- a. If QDM data element BEST CORRECTED VISUAL ACUITY (result: Visual Acuity 20/40 or Better) less than or equal to 90 days starts after end of Occurrence A of Procedure Performed QDM data element CATARACT SURGERY equals Yes, include in Numerator count. Numerator is represented by the letter A in the sample calculation listed at the end of this document. Letter A equals 6 patients in the sample calculation.
- b. If QDM data element BEST CORRECTED VISUAL ACUITY (result: Visual Acuity 20/40 or Better) less than or equal to 90 days starts after end of Occurrence A of Procedure Performed QDM data element CATARACT SURGERY equals No, include in the No/Missing Numerator Data Submitted count and stop processing.

SAMPLE CALCULATION:

Performance Rate =

Numerator (a=6 procedures)

÷

Denominator (b=10 procedures) – Denominator Exclusions (c=2 procedures) – *Denominator Exceptions (N/A)*

= 75.00%